

Acq. Operator : QC Team 2

Acq. Instrument : INSTRUMENT 1

Injection Date : 11/20/2019 5:14:22 PM

Location : Vial 23

Inj : 1

Inj Volume : 1.0 µl

Acq. Method : C:\CHEM32\1\METHODS\HPLC-1.M

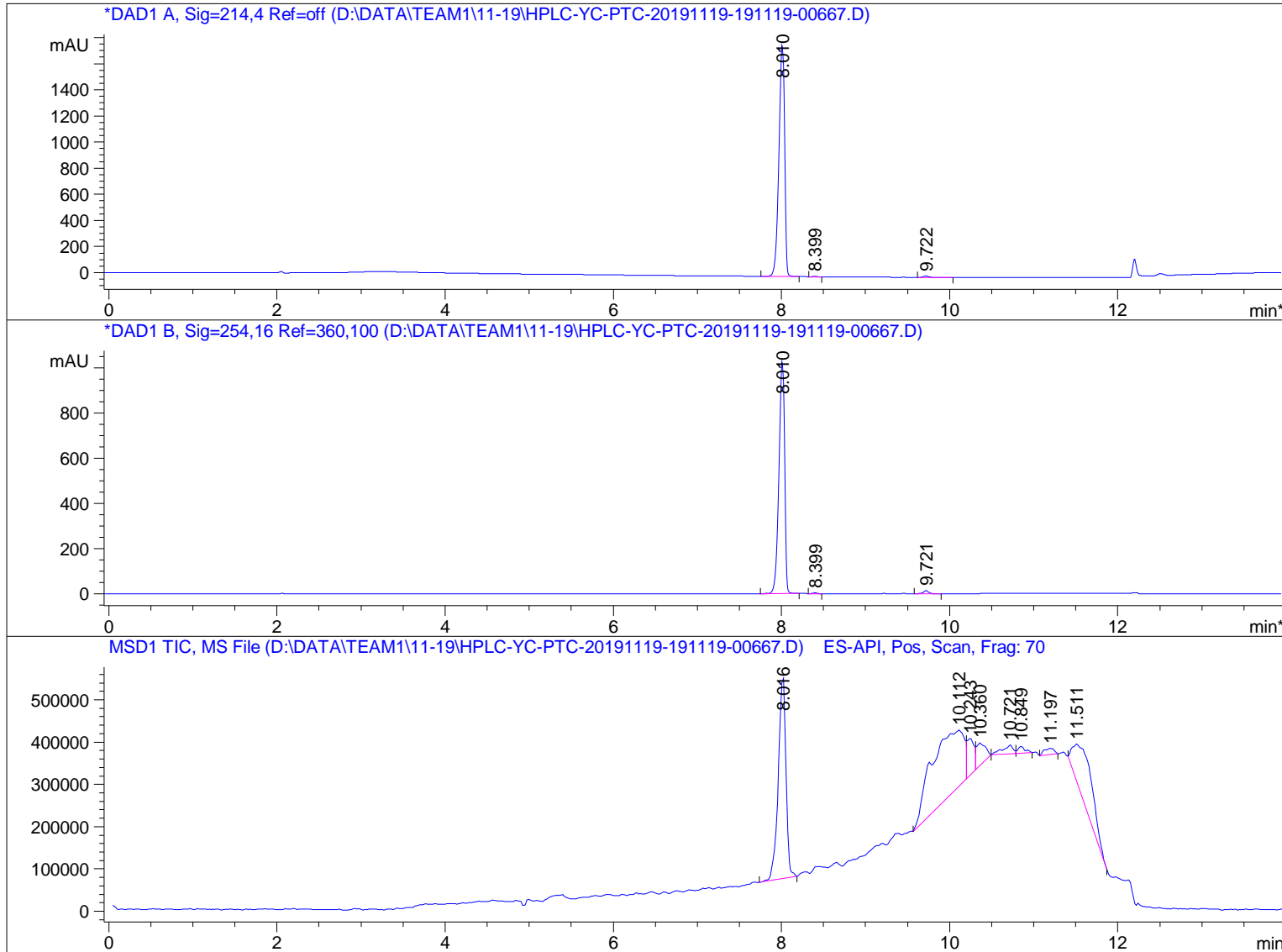
Last changed

Analysis Method : C:\CHEM32\1\METHODS\1-POS-3 MIN.M

Last changed

Sample Info : Easy-Access Method: 'HPLC-1'

Additional Info : Peak(s) manually integrated



Area Percent Report

Sorted By : Signal
 Multiplier: : 1.0000
 Dilution: : 1.0000
 Use Multiplier & Dilution Factor with ISTDs

Signal 1: DAD1 A, Sig=214,4 Ref=off
 Signal has been modified after loading from rawdata file!

| Peak # | RetTime [min] | Type | Width [min] | Area [mAU*s] | Height [mAU] | Area % |
|--------|---------------|------|-------------|--------------|--------------|---------|
| 1 | 8.010 | BB | 0.0712 | 8082.08740 | 1771.84363 | 99.2461 |
| 2 | 8.399 | BB | 0.0560 | 16.67976 | 4.63149 | 0.2048 |
| 3 | 9.722 | BB | 0.0637 | 44.71445 | 10.50509 | 0.5491 |

Totals : 8143.48162 1786.98020

Signal 2: DAD1 B, Sig=254,16 Ref=360,100
 Signal has been modified after loading from rawdata file!

| Peak # | RetTime [min] | Type | Width [min] | Area [mAU*s] | Height [mAU] | Area % |
|--------|---------------|------|-------------|--------------|--------------|---------|
| 1 | 8.010 | BB | 0.0710 | 4670.55078 | 1028.13025 | 98.6545 |
| 2 | 8.399 | BB | 0.0565 | 11.67278 | 3.20537 | 0.2466 |
| 3 | 9.721 | BB | 0.0608 | 52.02797 | 12.96553 | 1.0990 |

Totals : 4734.25153 1044.30114

Signal 3: MSD1 TIC, MS File

| Peak # | RetTime [min] | Type | Width [min] | Area | Height | Area % |
|--------|---------------|------|-------------|-----------|-----------|---------|
| 1 | 8.016 | BB | 0.0951 | 3.04222e6 | 4.80992e5 | 29.5488 |
| 2 | 10.112 | BV | 0.3896 | 4.07685e6 | 1.32979e5 | 39.5979 |
| 3 | 10.243 | VV | 0.0965 | 5.04210e5 | 8.71199e4 | 4.8973 |
| 4 | 10.360 | VB | 0.0946 | 3.82932e5 | 5.32355e4 | 3.7194 |
| 5 | 10.721 | BV | 0.1333 | 1.78844e5 | 2.05706e4 | 1.7371 |
| 6 | 10.849 | VB | 0.0930 | 9.15093e4 | 1.64024e4 | 0.8888 |
| 7 | 11.197 | BB | 0.1061 | 1.21789e5 | 1.48891e4 | 1.1829 |
| 8 | 11.511 | BB | 0.2638 | 1.89725e6 | 8.92947e4 | 18.4278 |

Totals : 1.02956e7 8.95483e5

*** End of Report ***